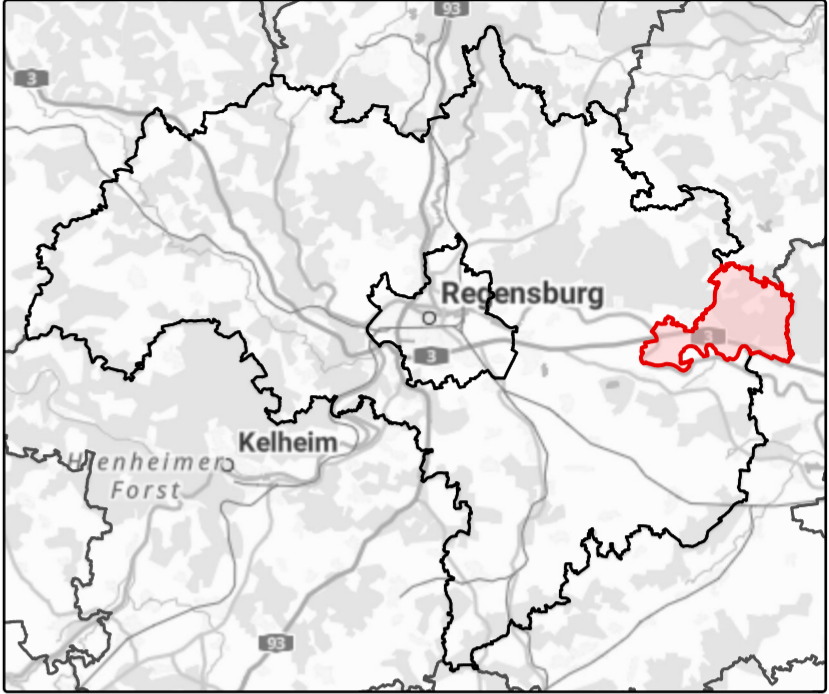
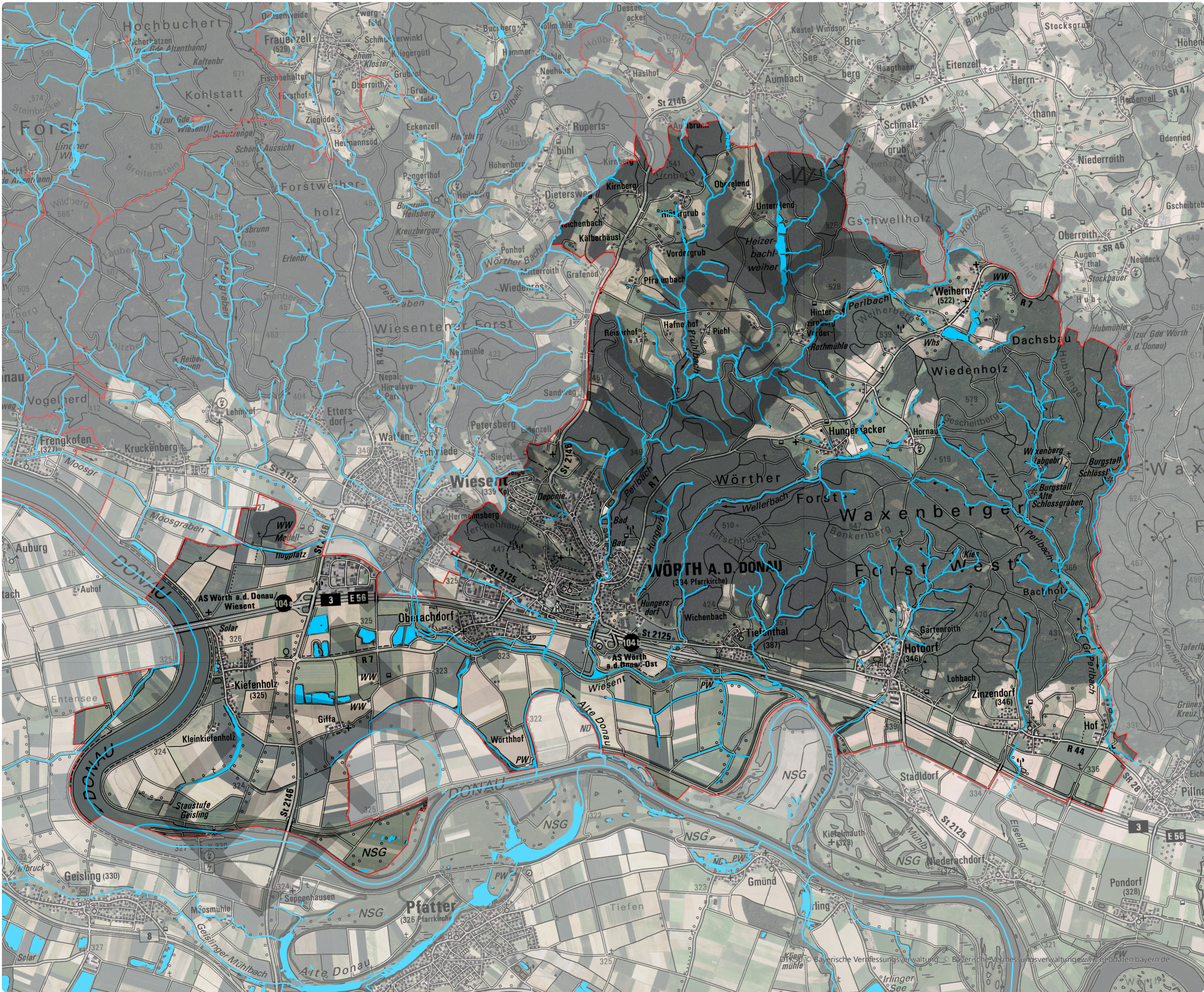






Gewässerrandstreifen-Kulisse für Wörth a.d.Donau



Legende



-  Gewässerrandstreifenpflichtiges Fließgewässer
-  Gewässerrandstreifenpflichtiges Stillgewässer
-  Verrohrung
-  Gemeindegrenzen

Entwurf zur Vorveröffentlichung der Gewässerrandstreifen-Kulisse (nach Art. 16 Abs. 1 Satz 1 Nr. 3 BayNatSchG)

[WWA R Karten Gewässerrandstreifen-Kulisse](#)

0 0,5 0,9 1,8 Kilometer

Maßstab: 1:32.000

  Bearbeiterin: Jasmin Kallus

Stand: 10.11.2025